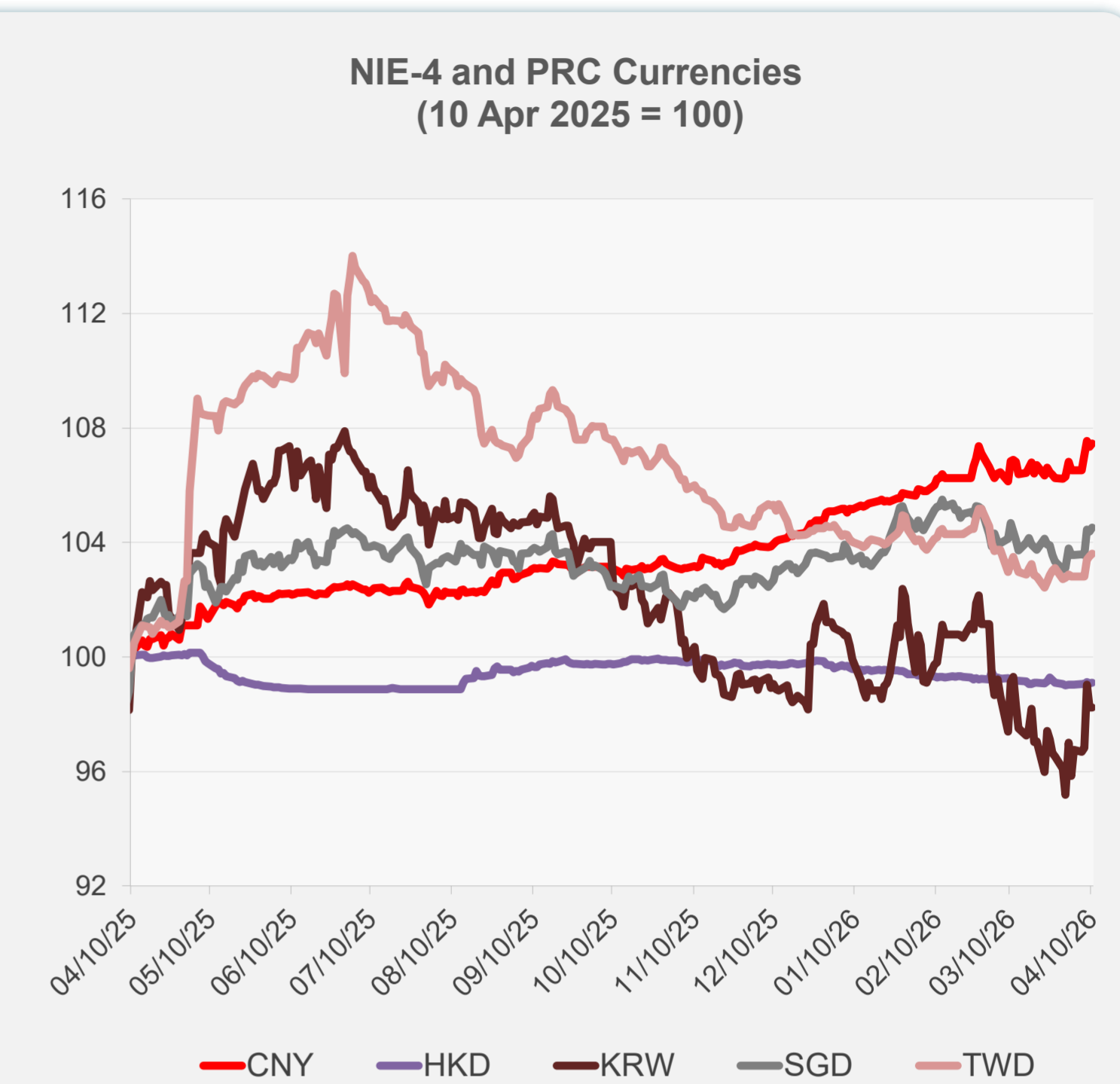
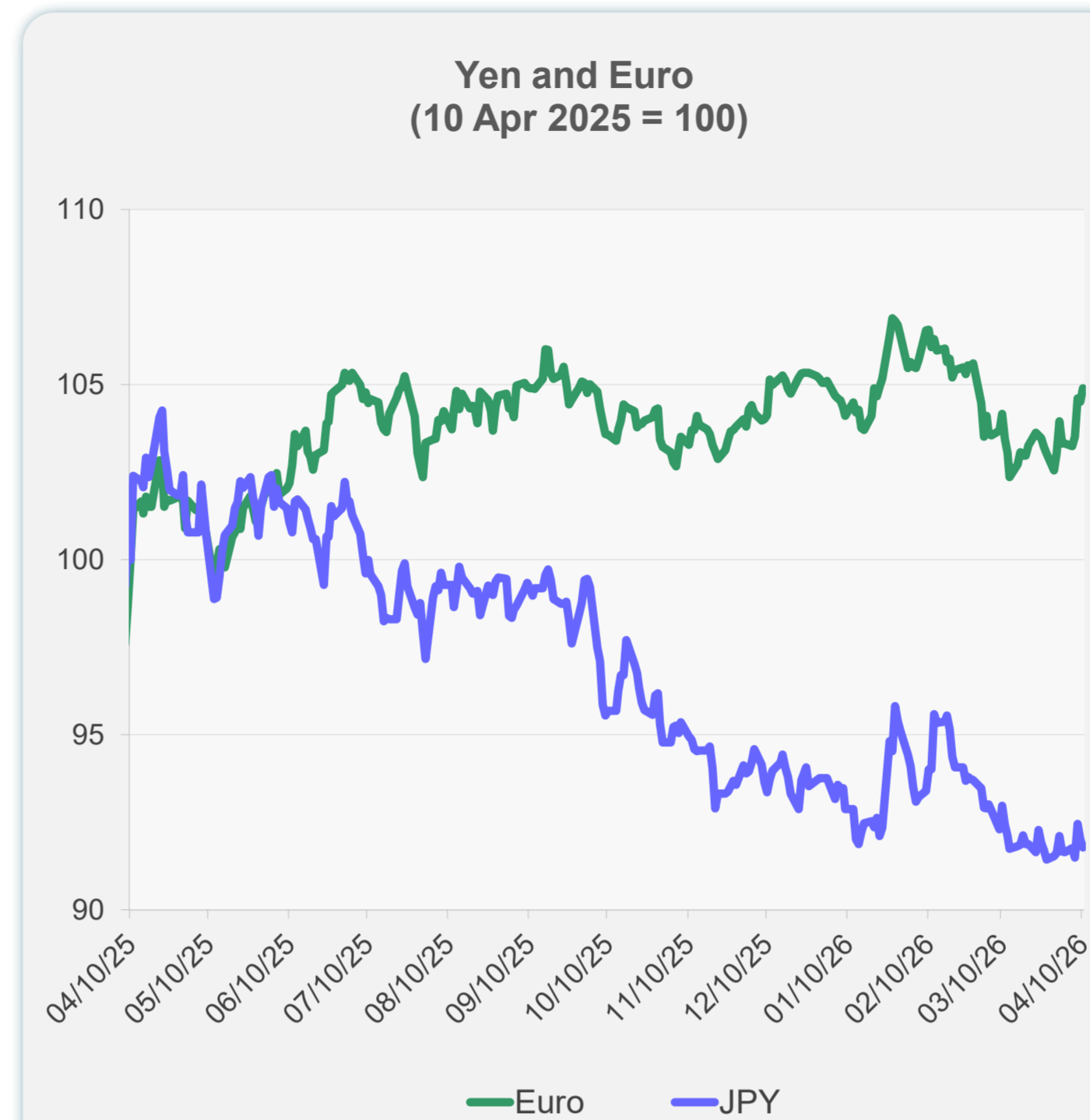
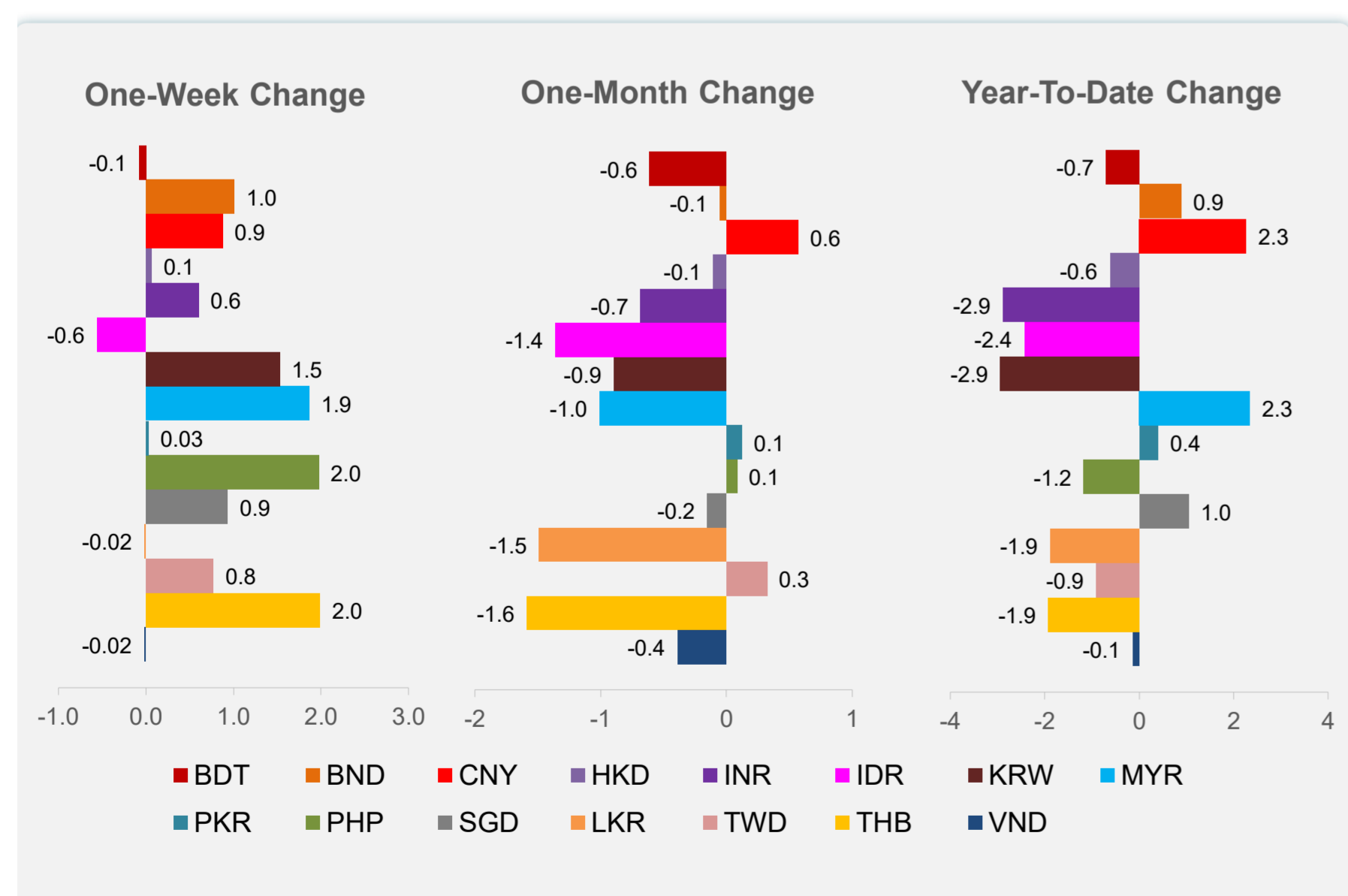
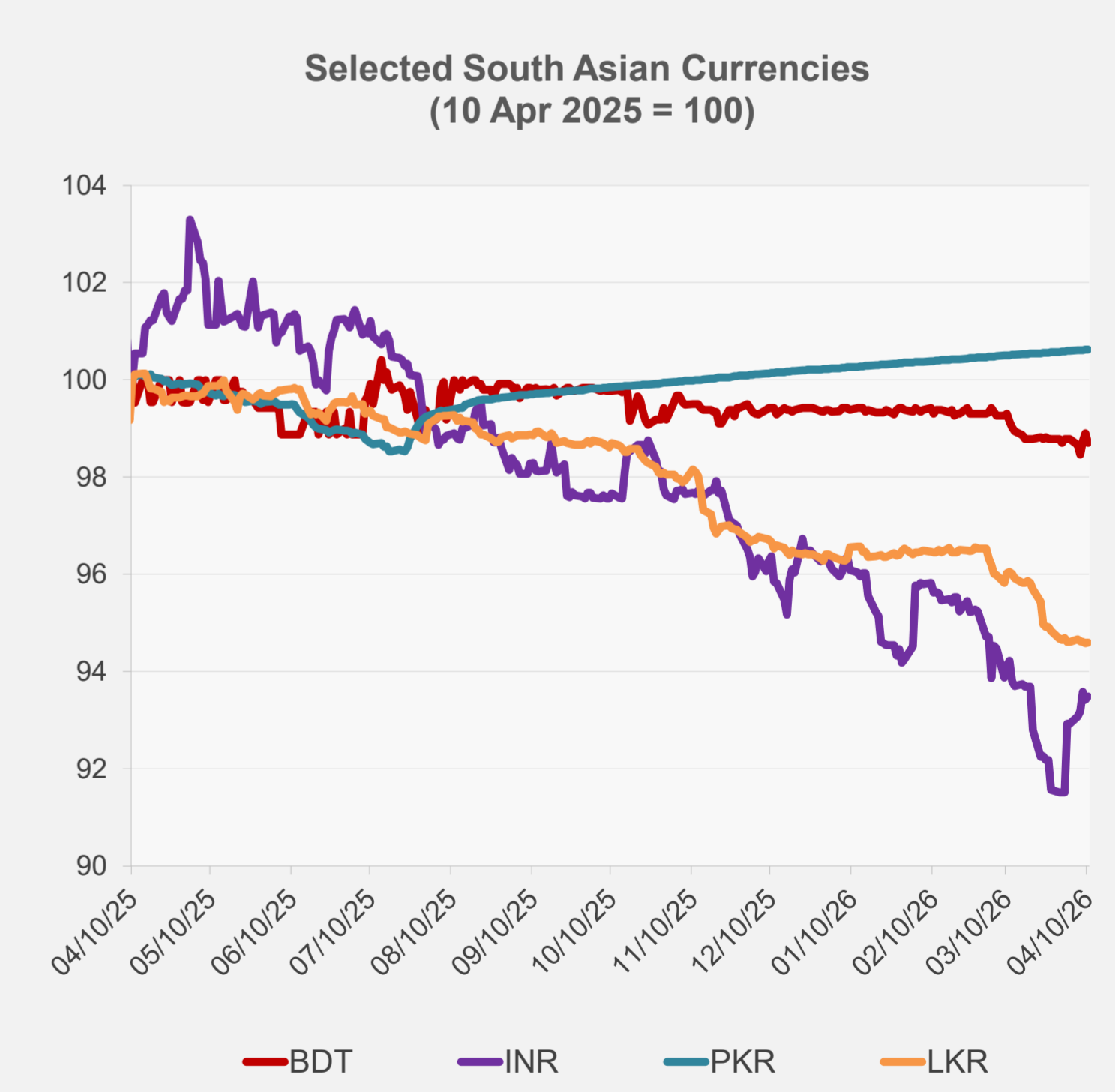
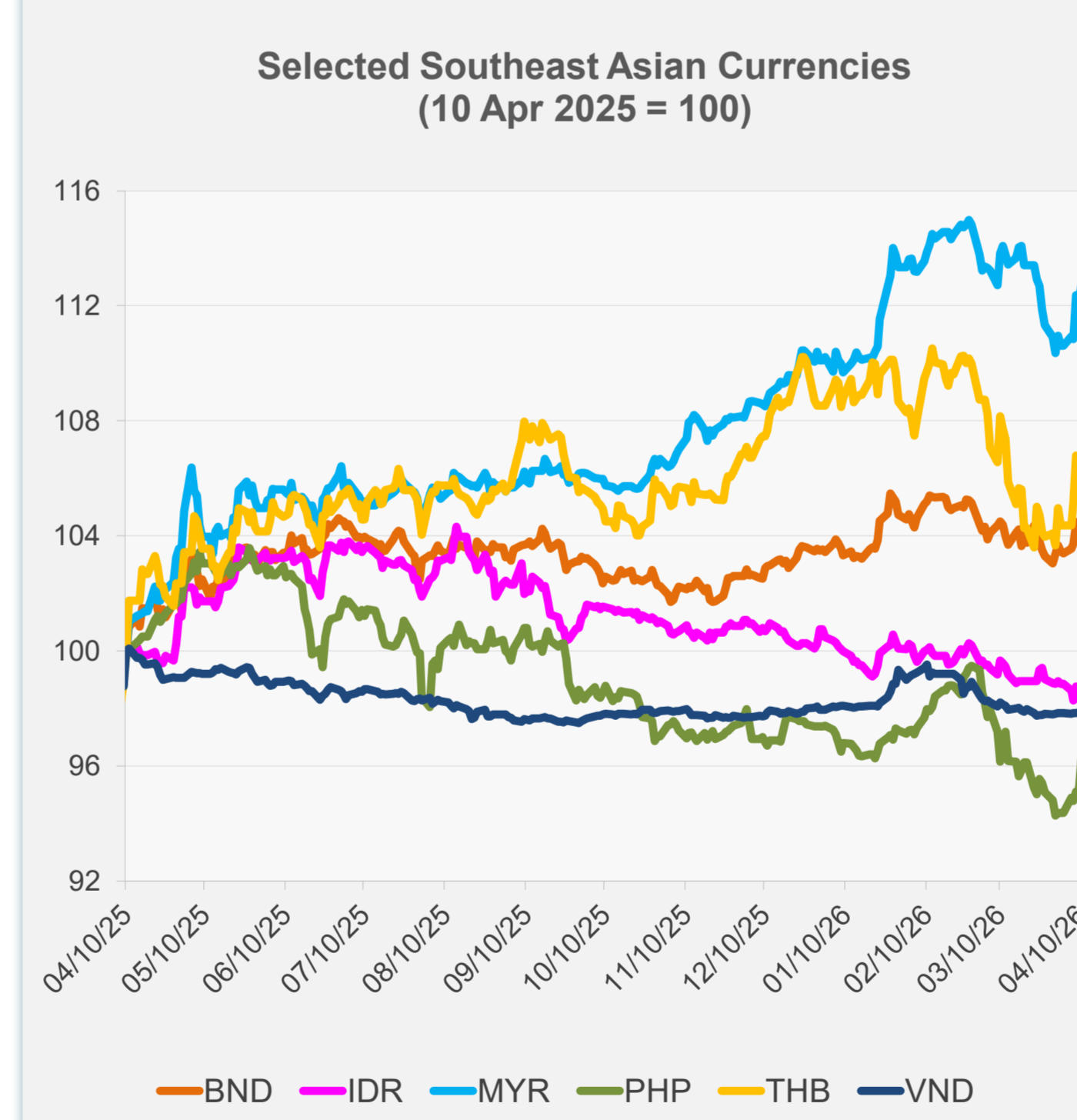


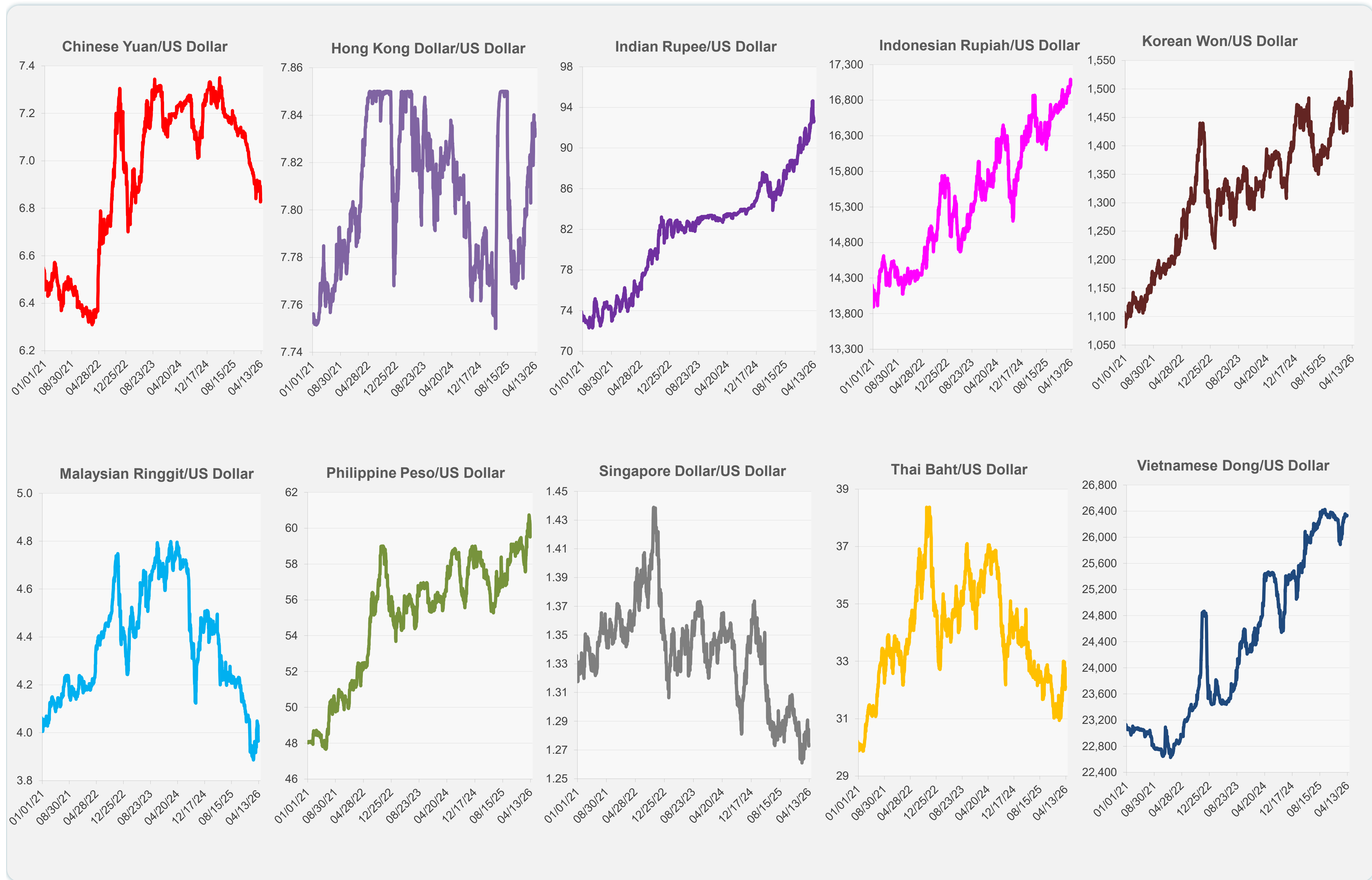
	Latest Closing	% change from Previous Day	% change from 01-Jan-26
Euro	0.85	0.38	-0.14
Japanese yen (JPY)	159.35	-0.24	-2.11
Bangladeshi taka (BDT)	123.10	-0.20	-0.69
Brunei dollar (BND)	1.27	-0.05	0.89
Chinese yuan (CNY)	6.83	0.11	2.26
Hong Kong dollar (HKD)	7.83	0.03	-0.62
Indian rupee (INR)	92.65	0.07	-2.88
Indonesian rupiah (IDR)	17,090.00	-0.03	-2.43
Korean won (KRW)	1,482.50	0.00	-2.93
Malaysian ringgit (MYR)	3.97	0.45	2.35
Pakistan rupee (PKR)	279.00	0.00	0.40
Philippine peso (PHP)	59.50	1.18	-1.17
Singapore dollar (SGD)	1.27	0.13	1.05
Sri Lanka rupee (LKR)	315.55	0.02	-1.89
Taipei,China NT dollar (TWD)	31.73	0.07	-0.91
Thai baht (THB)	32.12	-0.11	-1.92
Vietnamese dong (VND)	26,336.00	-0.04	-0.14



NIE = Newly Industrialized Economies



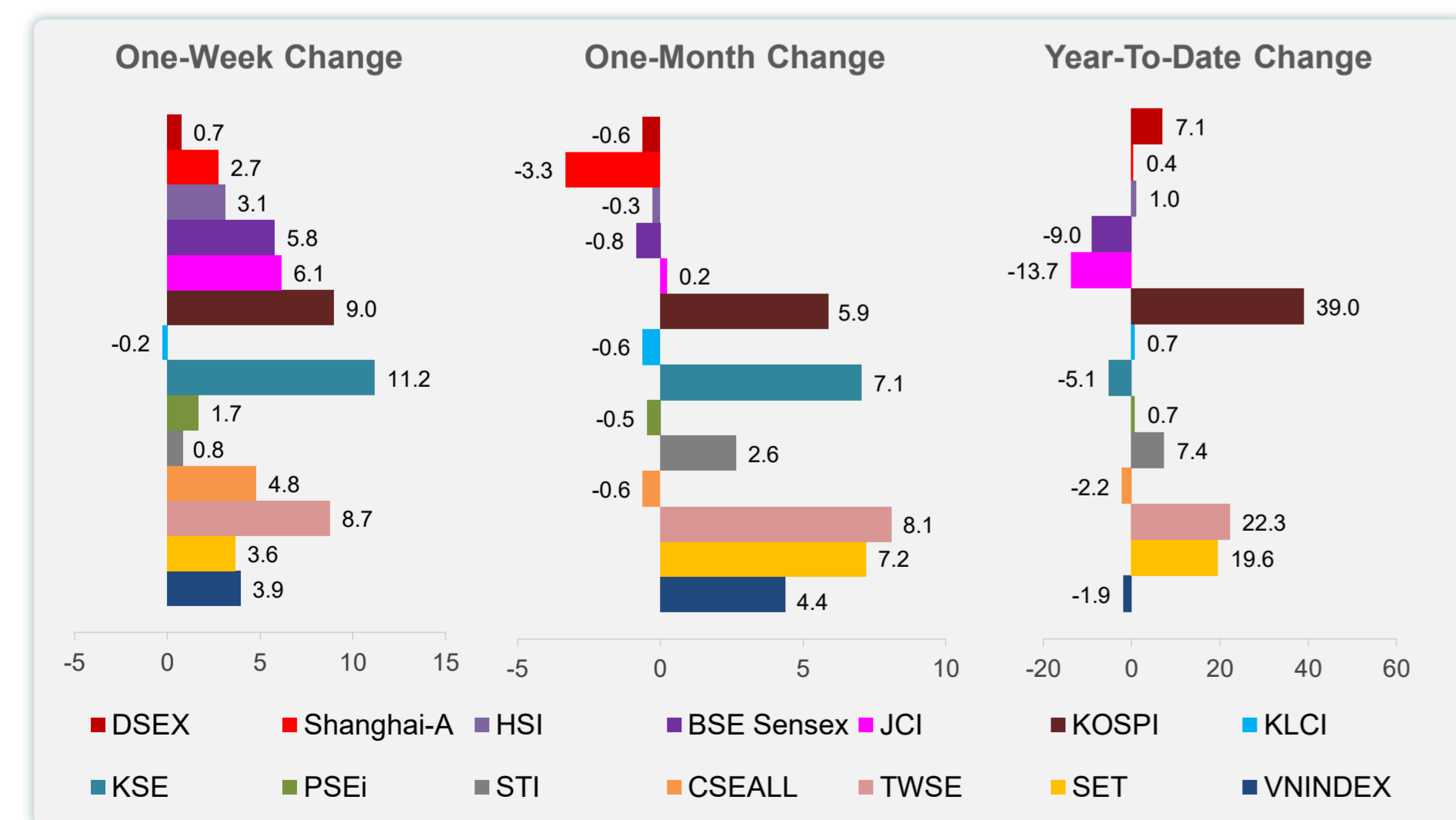
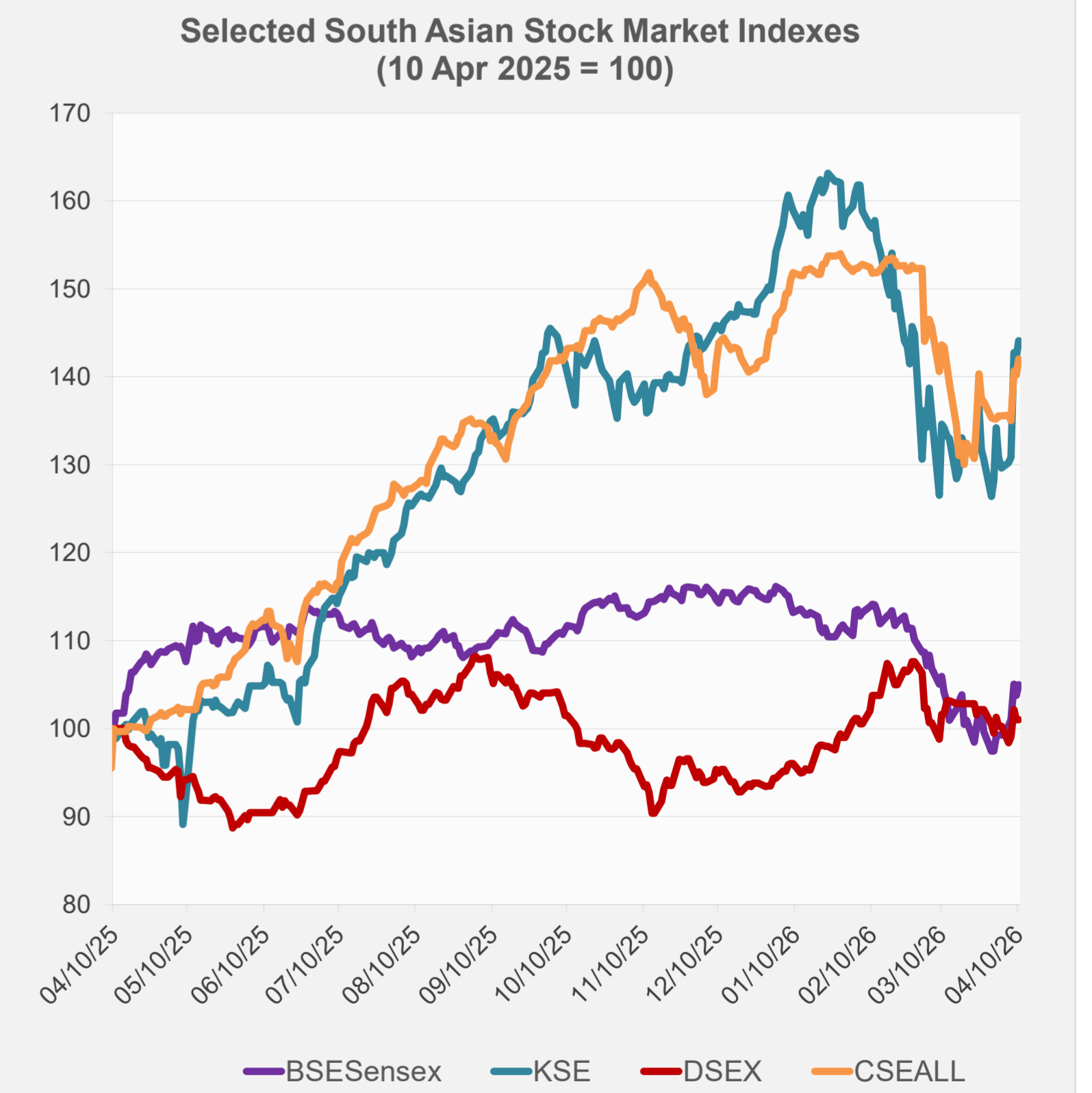
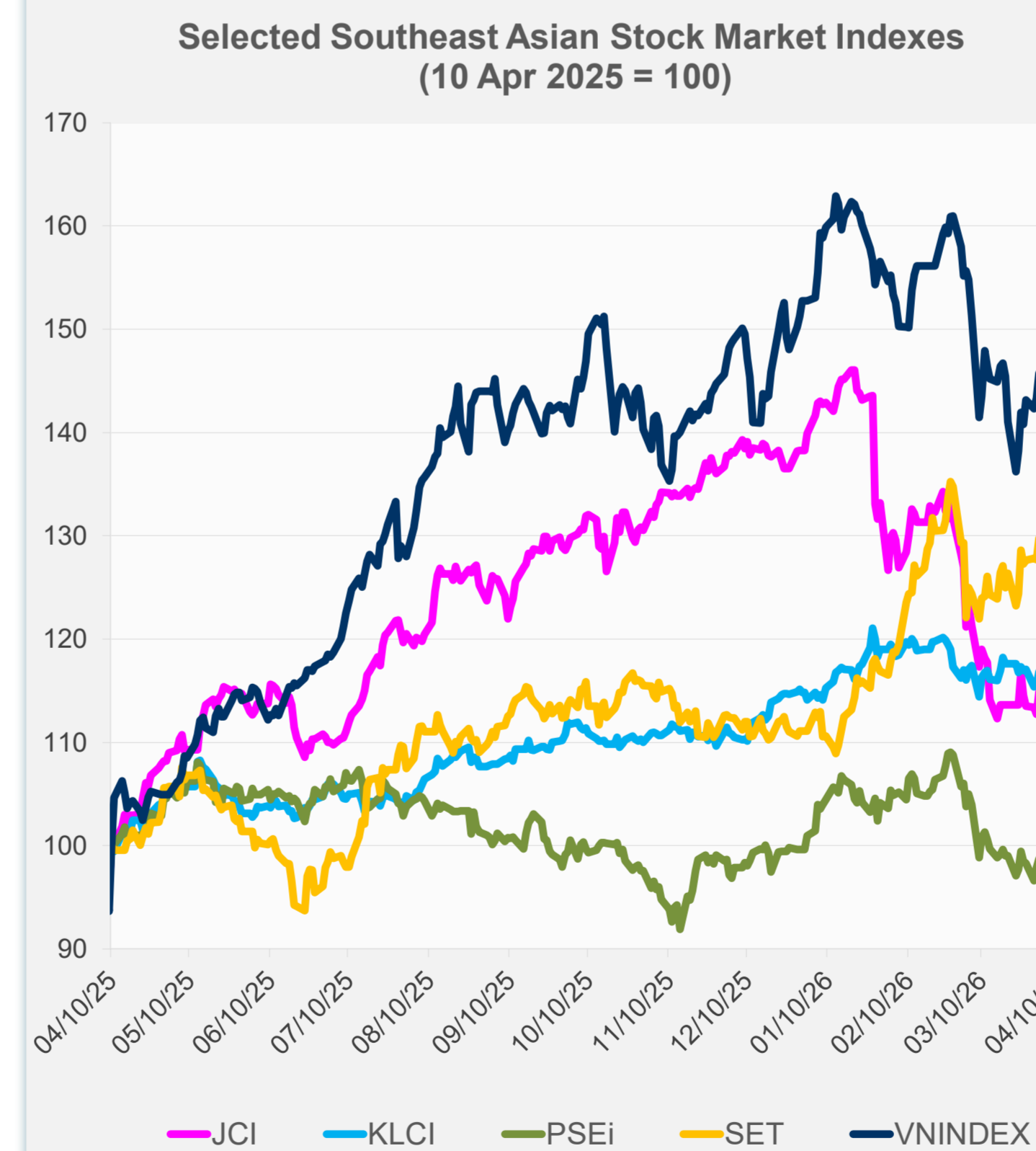
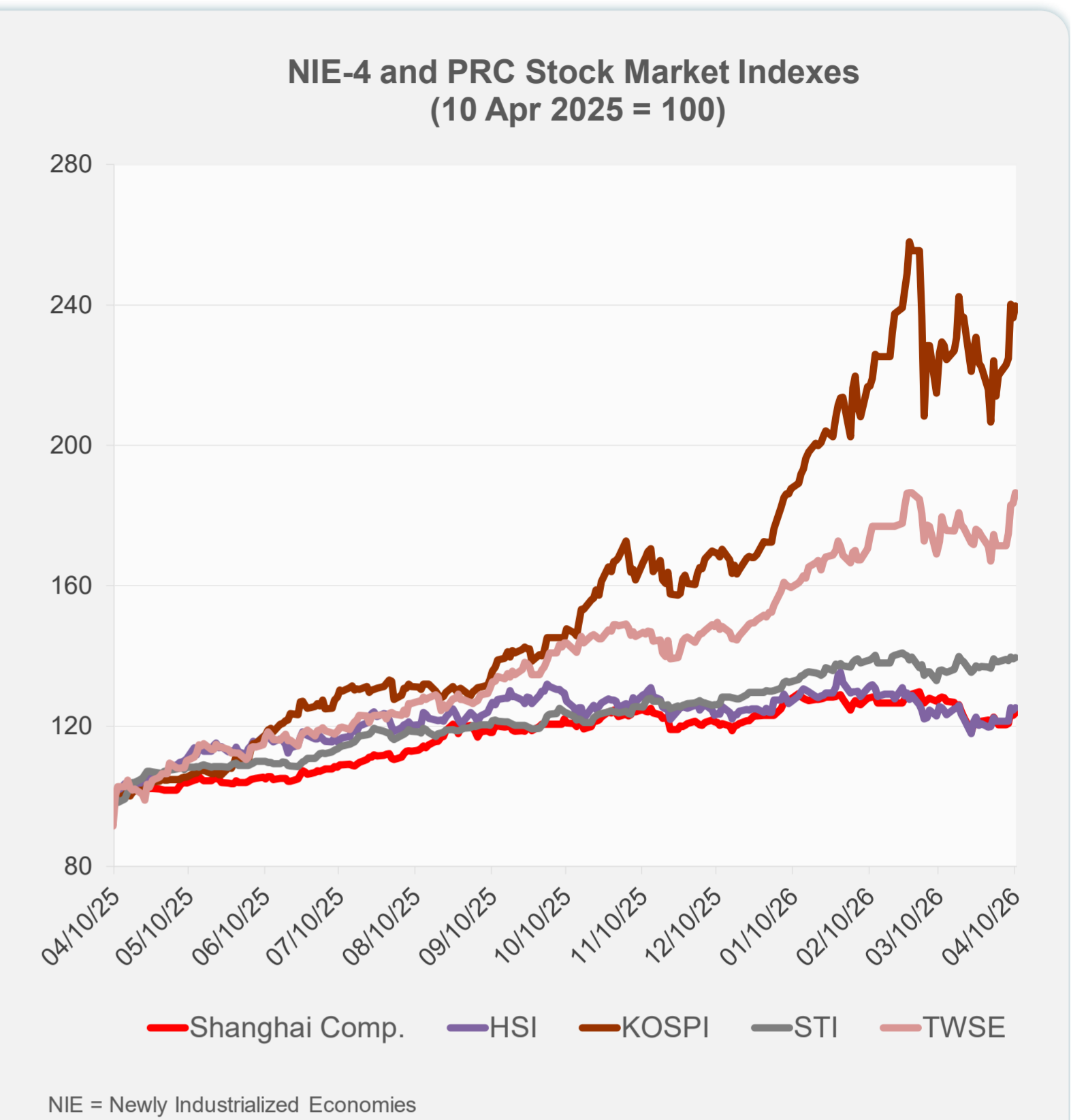
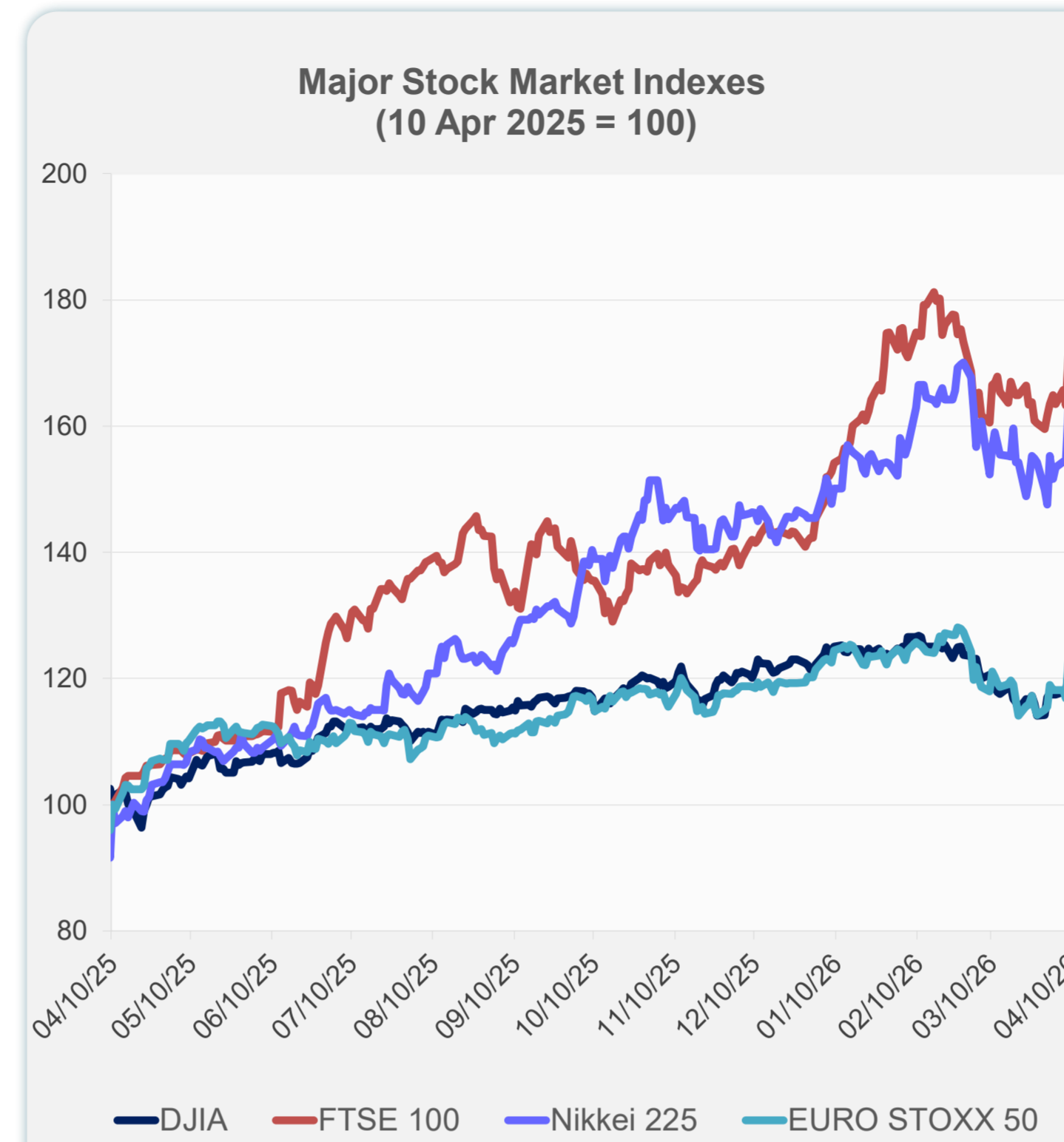
Note: Negative/Decreasing values indicate depreciation of local currency, and positive/increasing values indicate appreciation.
Source: ADB calculations using data from Bloomberg and Haver Analytics.



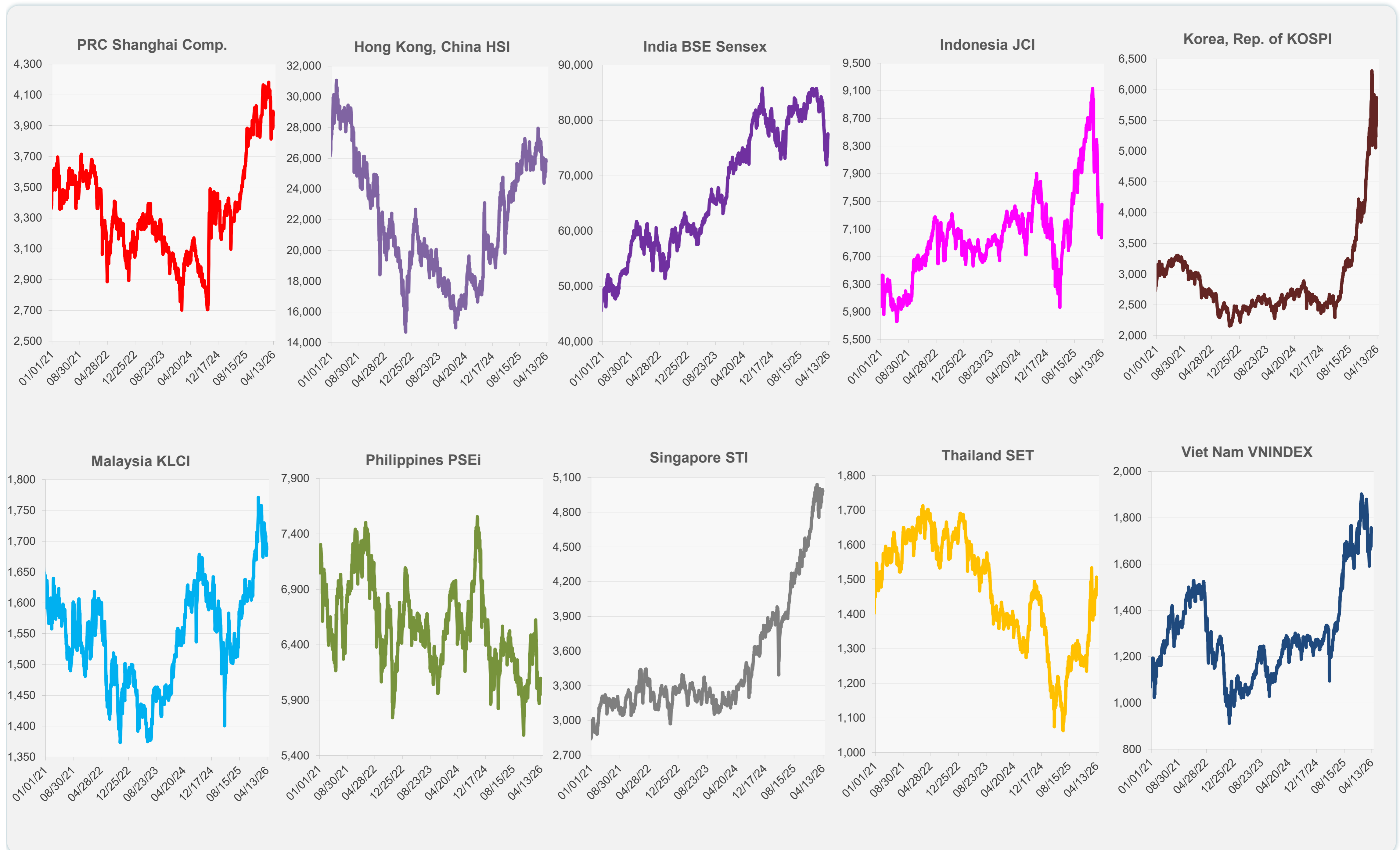
Source: Haver Analytics.

Daily Market Watch
STOCK INDEXES

	Latest Closing	% change from Previous Day	% change from 01-Jan-26
US Dow Jones Ind Avg	47,916.57	-0.56	-0.31
US NASDAQ	22,902.89	0.35	-1.46
US S&P 500	6,816.89	-0.11	-0.42
UK FTSE 100	14,073.79	2.81	24.97
EURO STOXX 50	5,926.11	0.51	2.33
Japan NIKKEI 225	56,924.11	1.84	13.08
Bangladesh DSEX	5,257.70	0.00	7.07
PRC Shanghai Comp.	3,986.22	0.51	0.44
Hong Kong, China HSI	25,893.54	0.55	1.03
India BSE Sensex	77,550.25	1.20	-8.97
Indonesia JCI	7,458.50	2.07	-13.74
Korea, Rep. of KOSPI	5,858.87	1.40	39.03
Malaysia KLCI	1,691.31	0.30	0.67
Pakistan KSE 100	167,457.30	1.34	-5.11
Philippines PSEi	6,098.21	0.14	0.75
Singapore STI	4,989.41	0.25	7.39
Sri Lanka CSEALL	22,128.66	1.30	-2.19
Taipei, China TWSE	35,417.83	1.60	22.28
Thailand SET	1,506.84	1.15	19.62
Viet Nam VNINDEX	1,750.00	0.77	-1.93



Sources: ADB calculations using data from Bloomberg and CEIC Data Company.

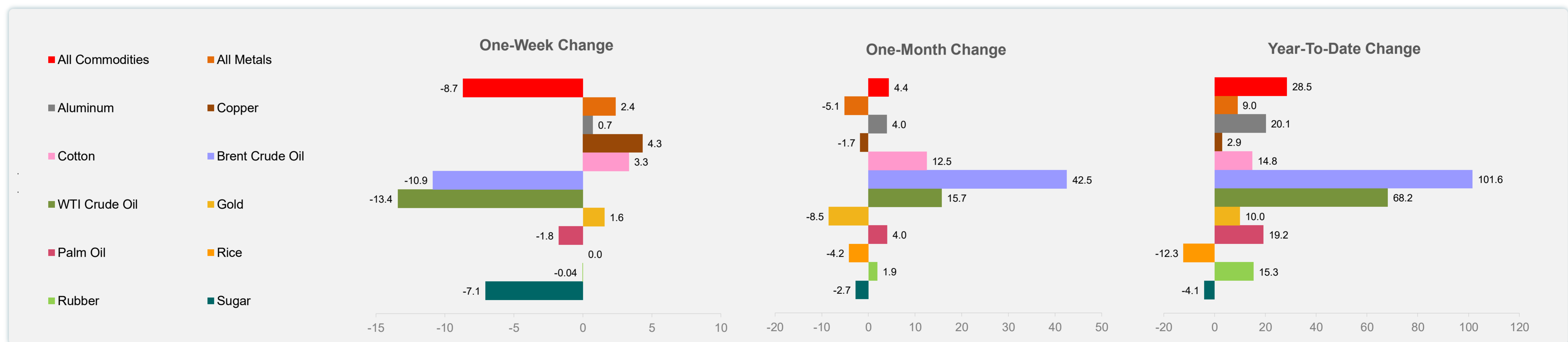
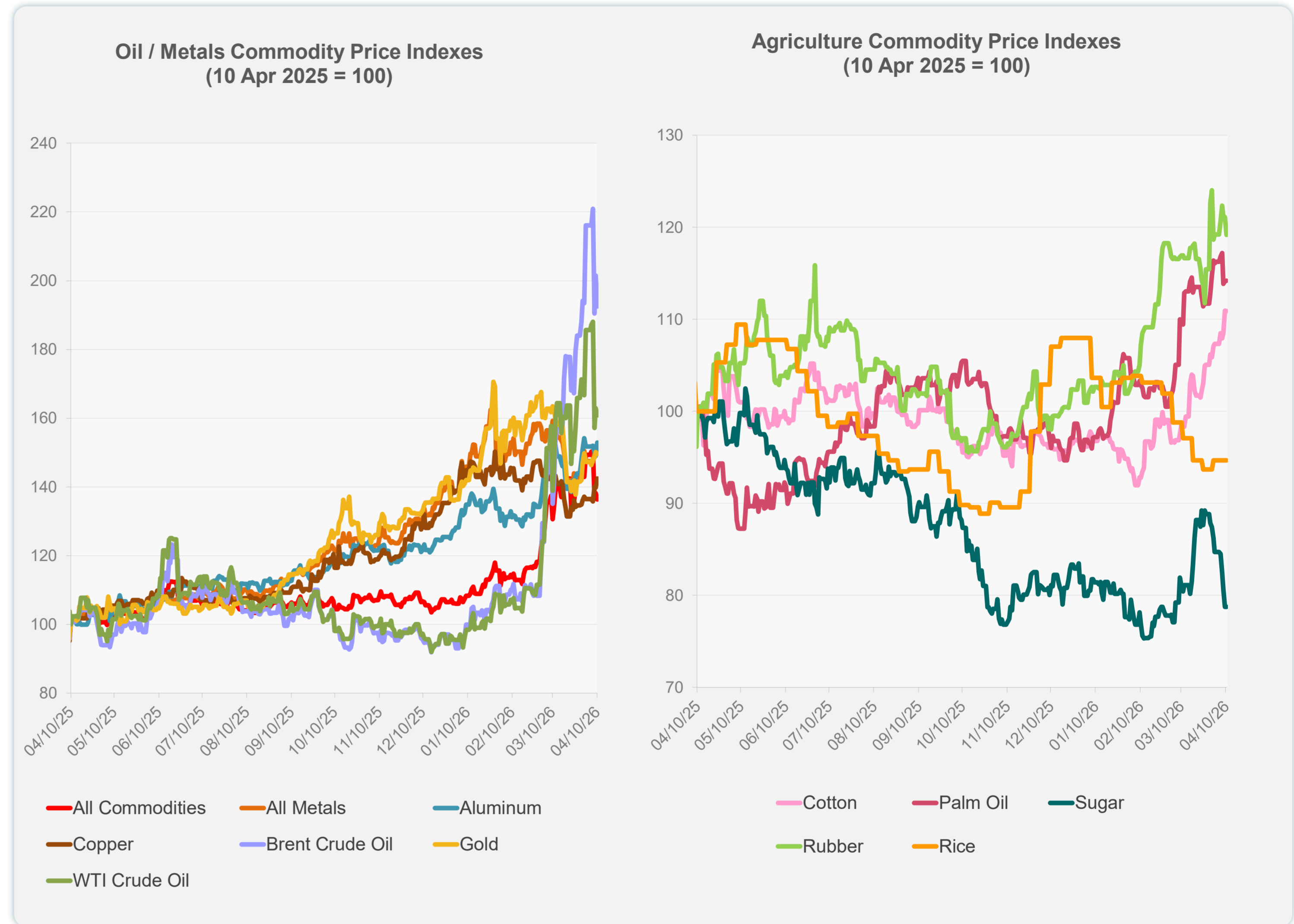


Sources: ADB calculations using data from Bloomberg and CEIC Data Company.

Daily Market Watch
COMMODITY PRICES

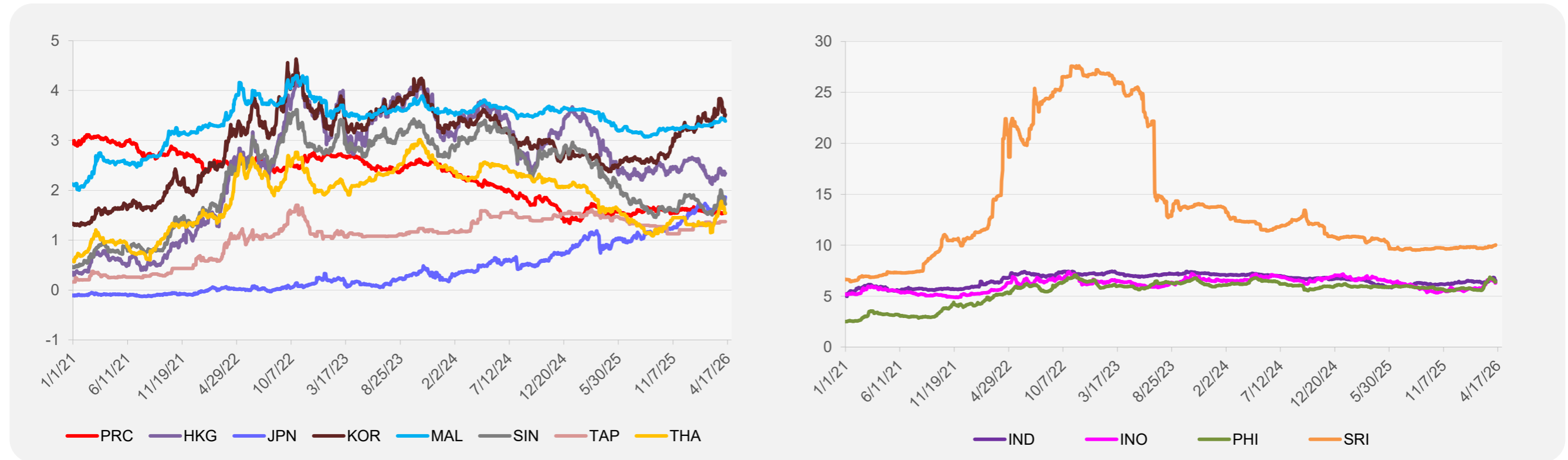
	Unit	Latest Closing	% change from Previous Day	% change from 01-Jan-26
S&P All Commodities	US\$	704.67	-1.34	28.47
S&P All Metals	US\$	483.69	0.52	9.00
Aluminum	US\$/metric ton	3,565.20	2.60	20.12
Copper	US\$/metric ton	12,819.36	1.85	2.94
Cotton	US cents/lb	71.22	-0.06	14.83
Brent Crude Oil	US\$/barrel	125.88	-4.48	101.59
WTI Crude Oil	US\$/barrel	96.57	-1.33	68.18
Gold	US\$/troy oz	4,749.75	-0.36	9.96
Palm Oil	US\$/metric tonne	1,154.89	0.02	19.23
Rice ¹	US\$/metric ton	391.00	0.00	-12.33
Rubber ²	US\$/kg	247.90	-1.59	15.30
Sugar	US cents/lb	14.19	0.00	-4.06

¹ Latest closing price from 1 April 2026.
² Singapore Exchange, Ribbed Smoked Sheet Rubber.

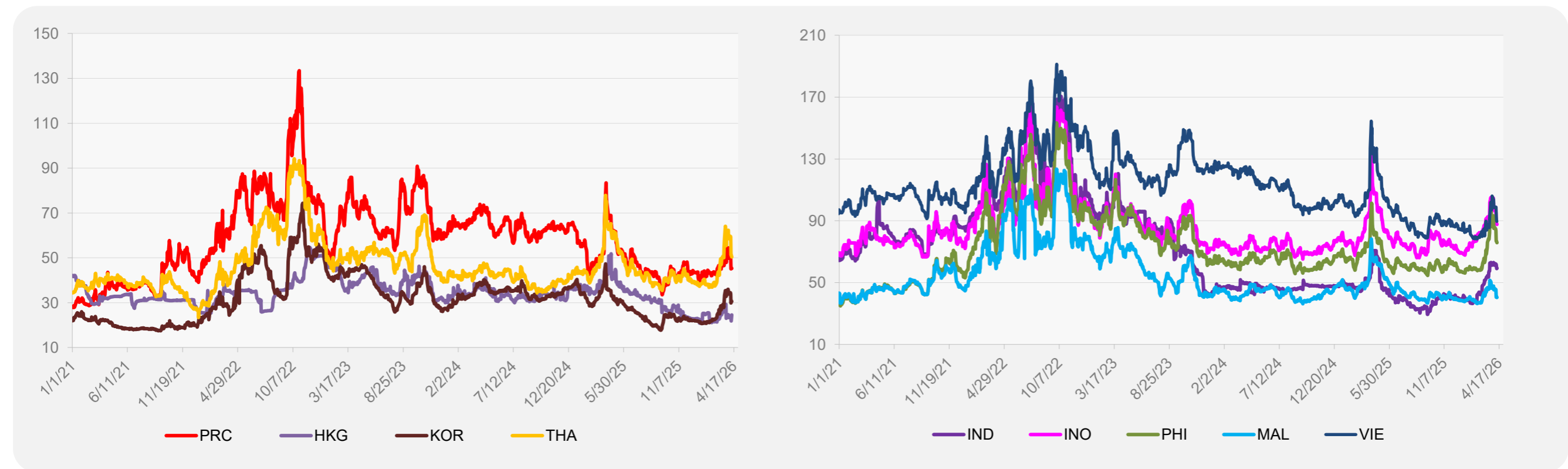


Source: ADB calculations using data from Bloomberg.

5-YEAR LOCAL CURRENCY GOVERNMENT BOND YIELDS (%)



5-YEAR CREDIT DEFAULT SWAP¹



¹ In USD and based on sovereign bonds.
Source: ADB calculations using data from Bloomberg.